

What's in your moraine?

3-D mapping in southern Ontario

Abigail Burt

Ontario Geological Survey

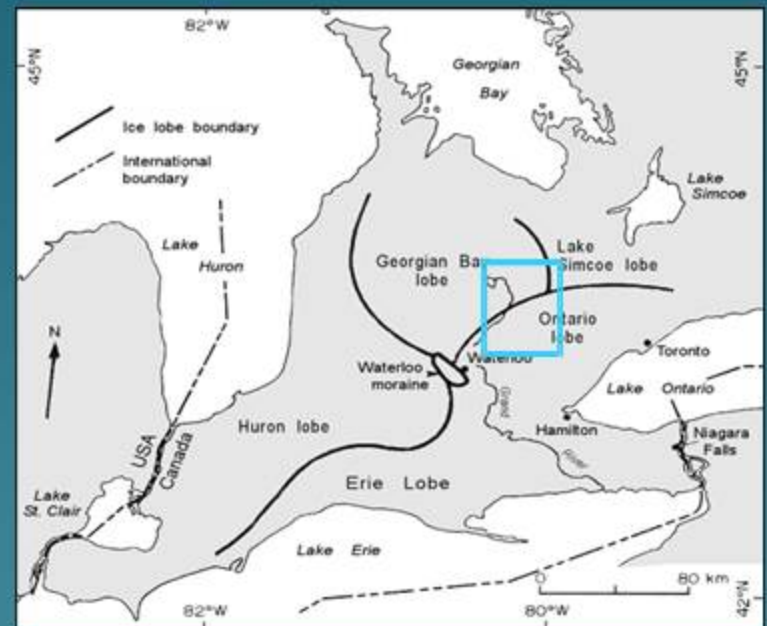
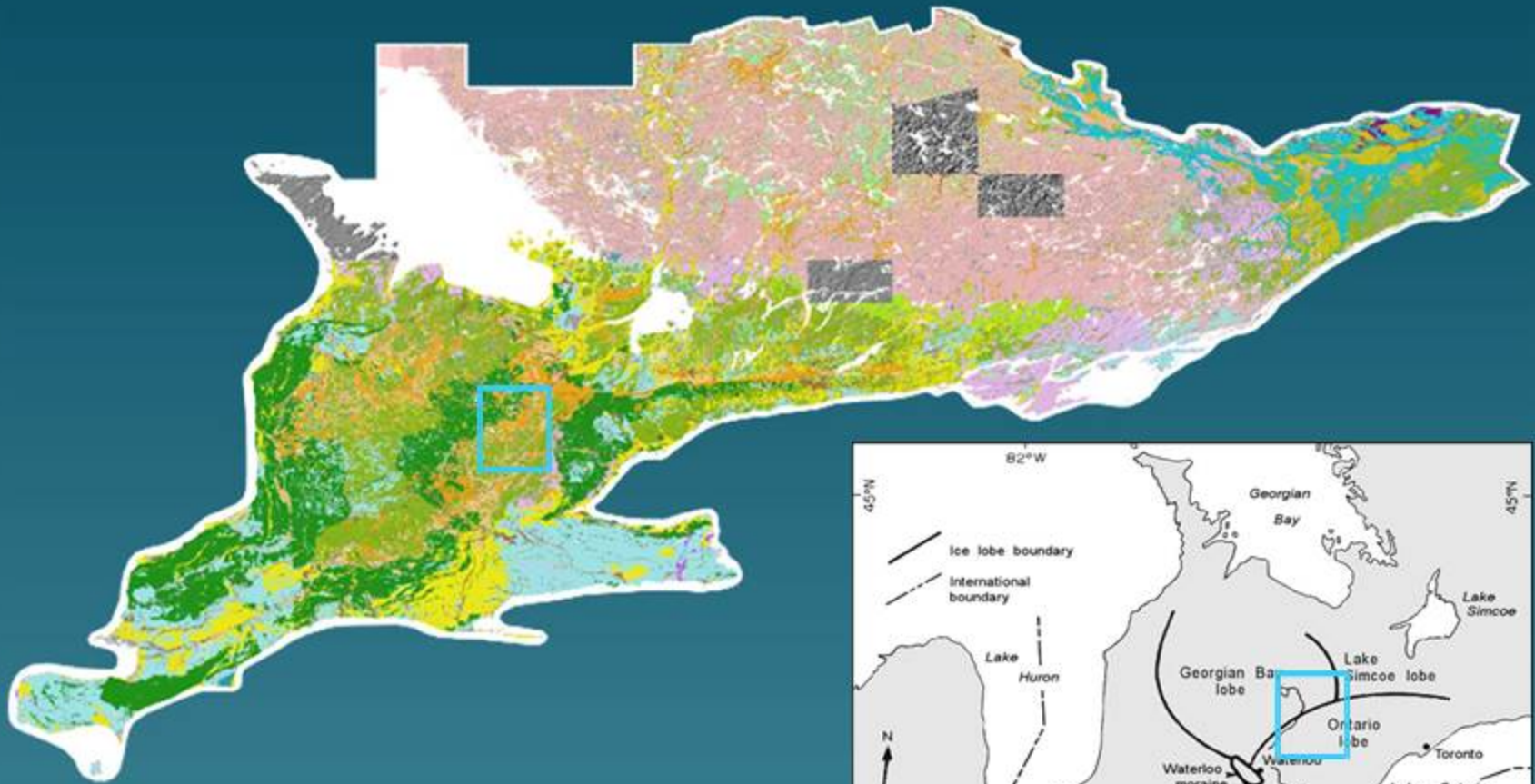


The Orangeville moraine...an exciting place to be!

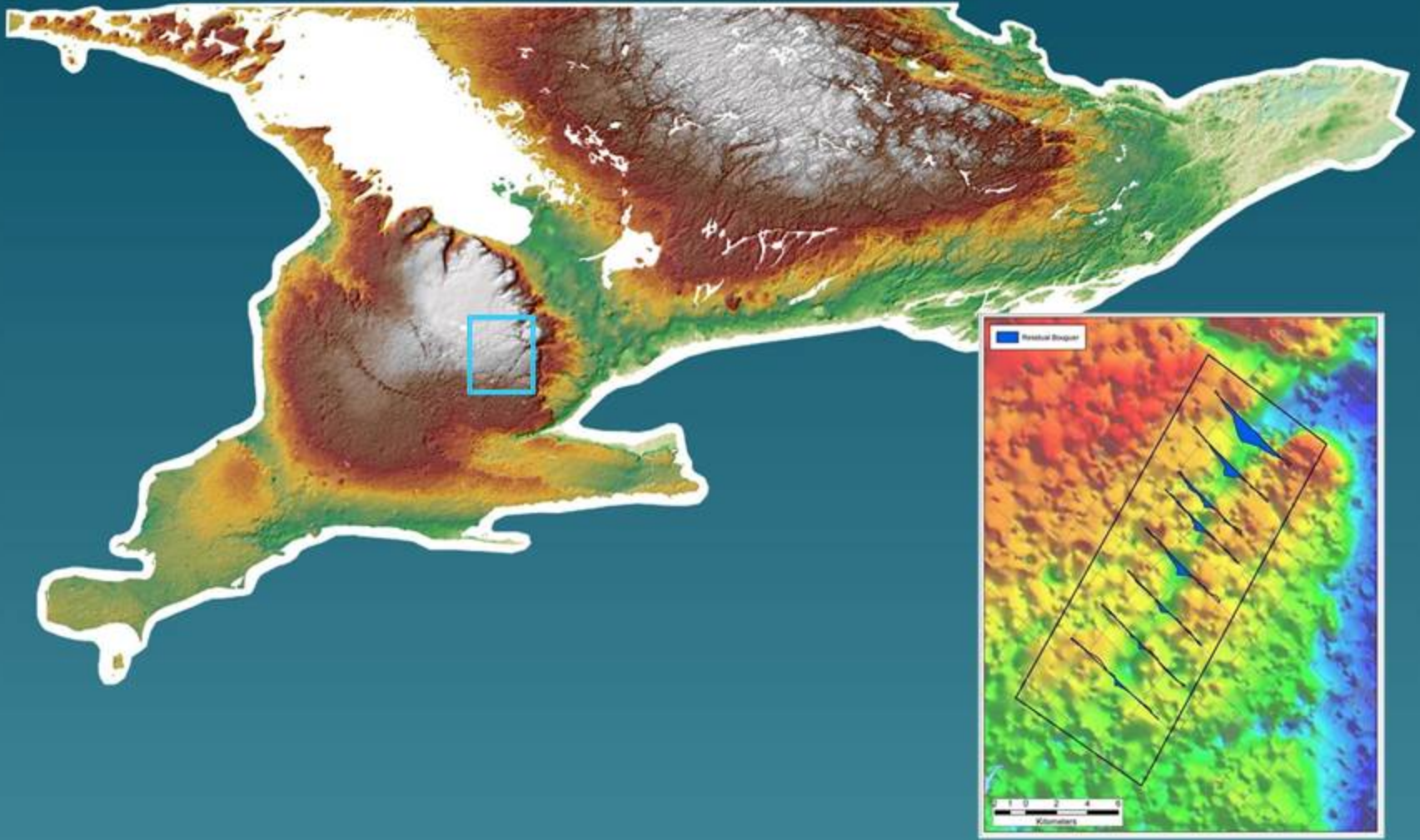


- Interlobate zone
- A great moraine
- Old tills
- Escarpments
- Buried bedrock valleys

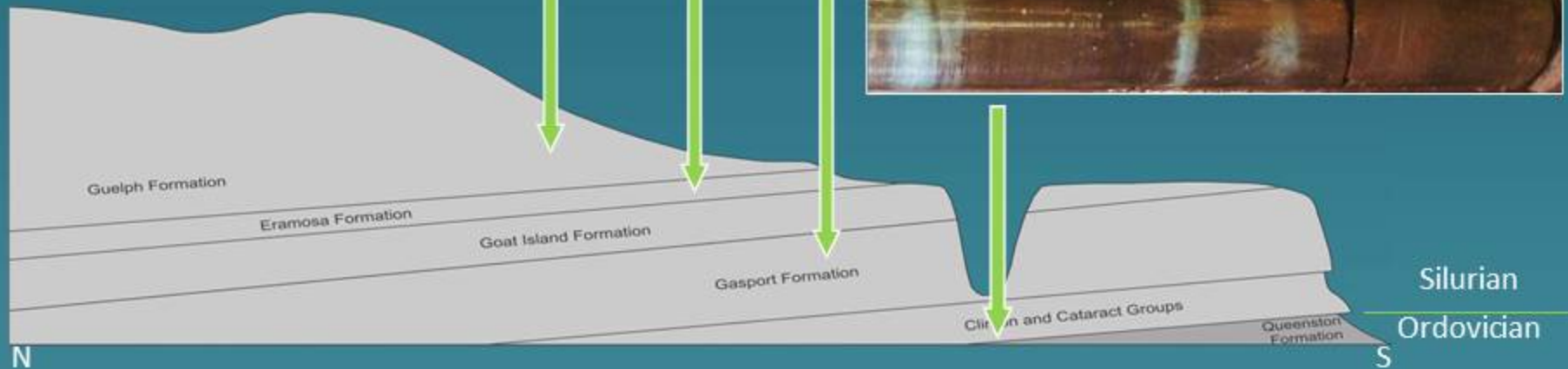
Surficial geology



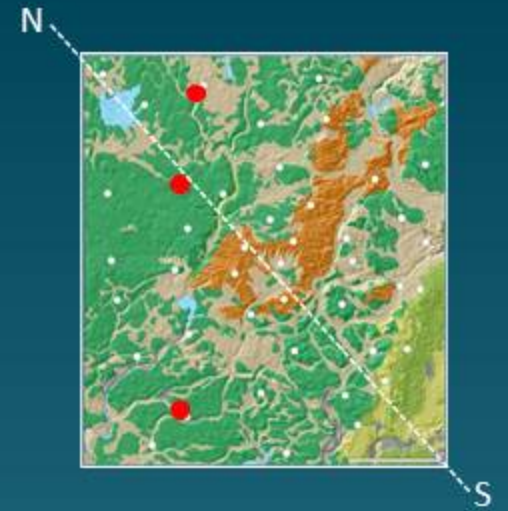
Bedrock topography



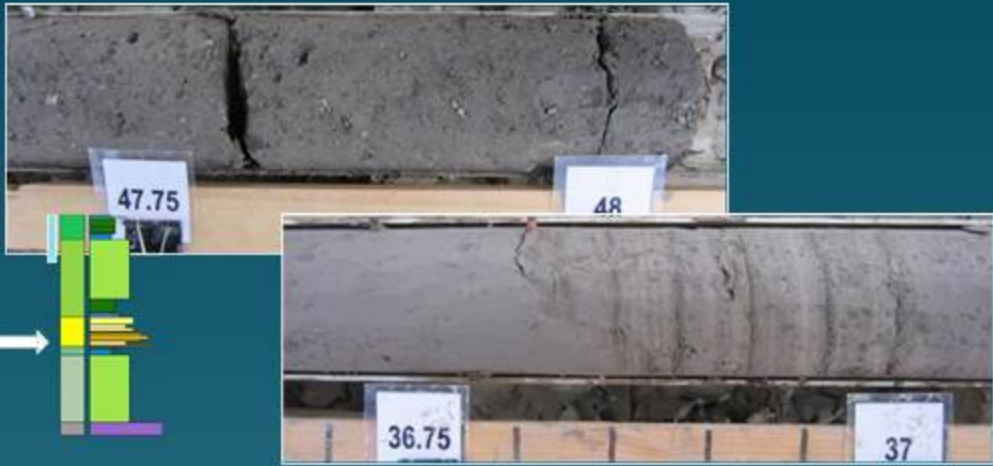
Bedrock



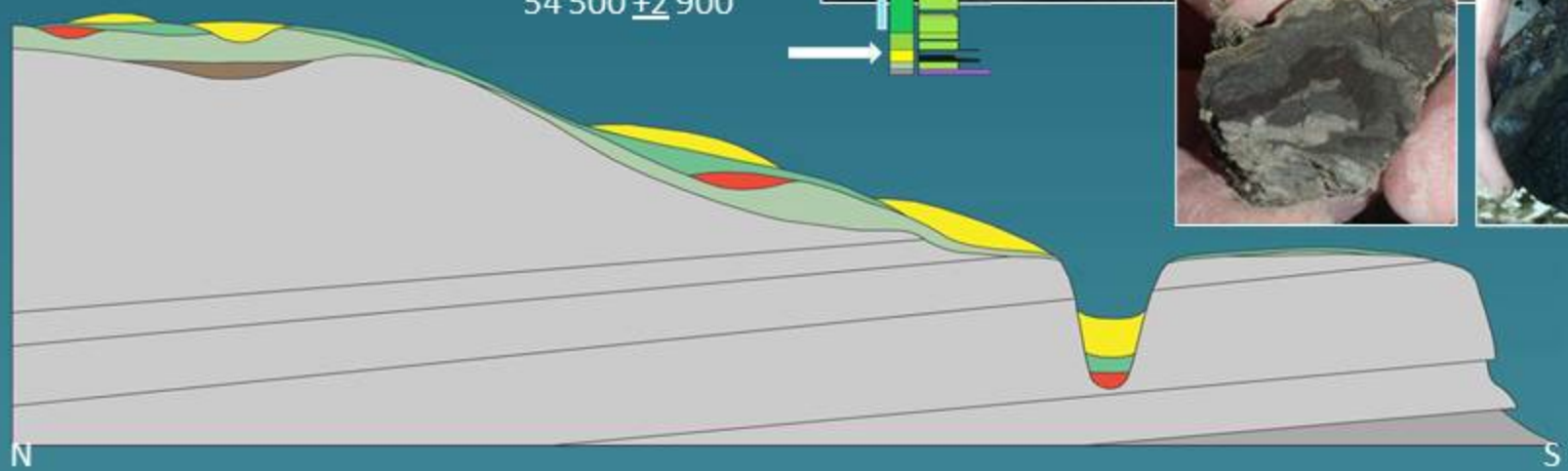
Old tills



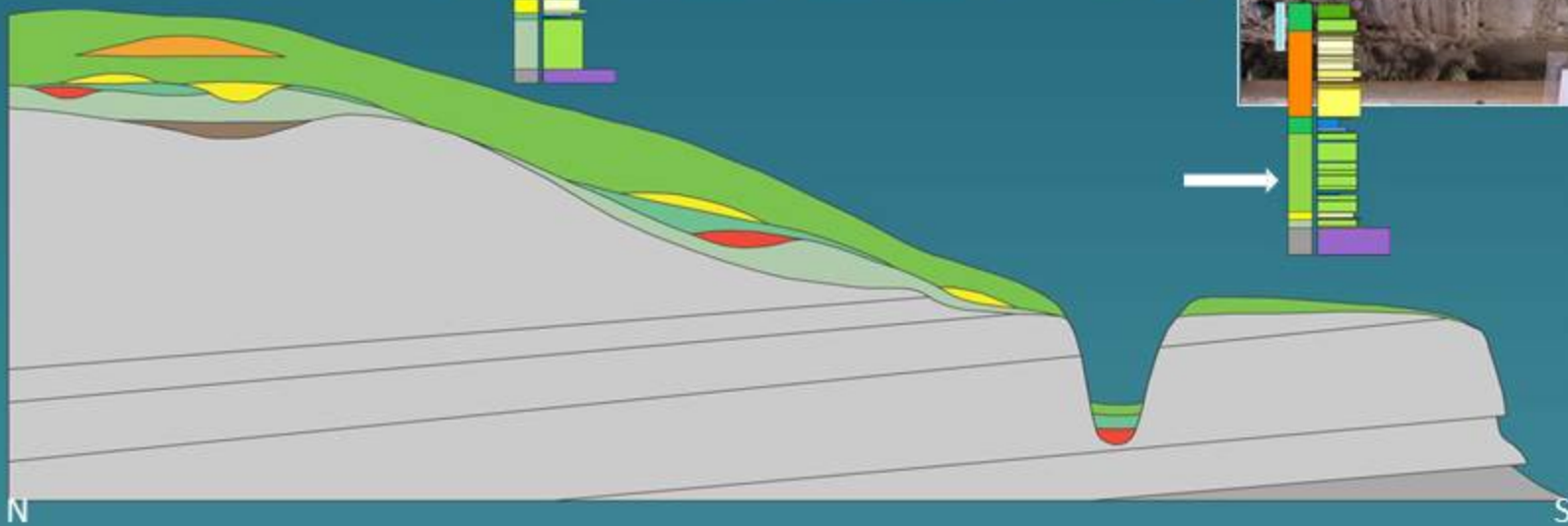
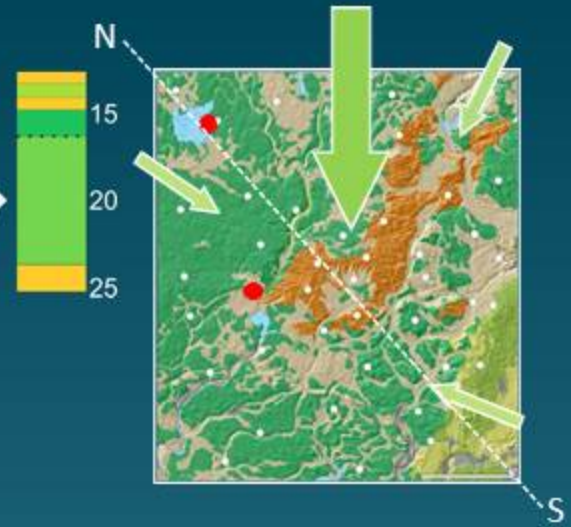
Canning Drift – more old till



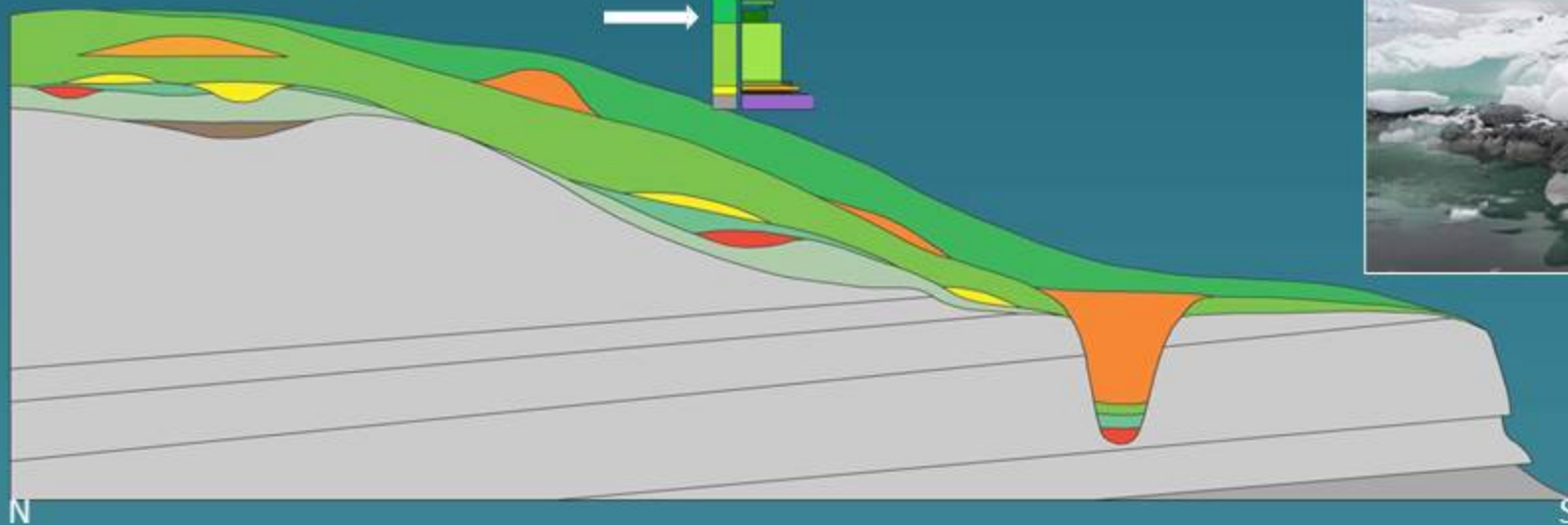
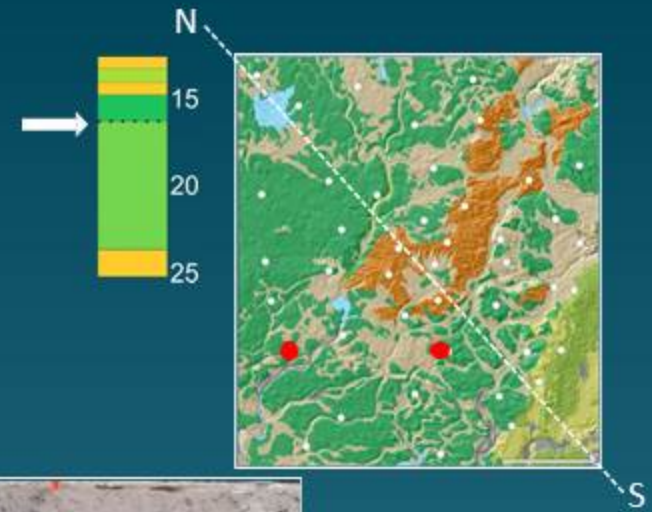
>52 200
54 500 +2 900



Catfish Creek Till



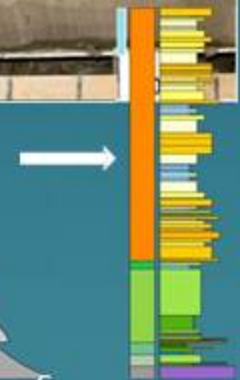
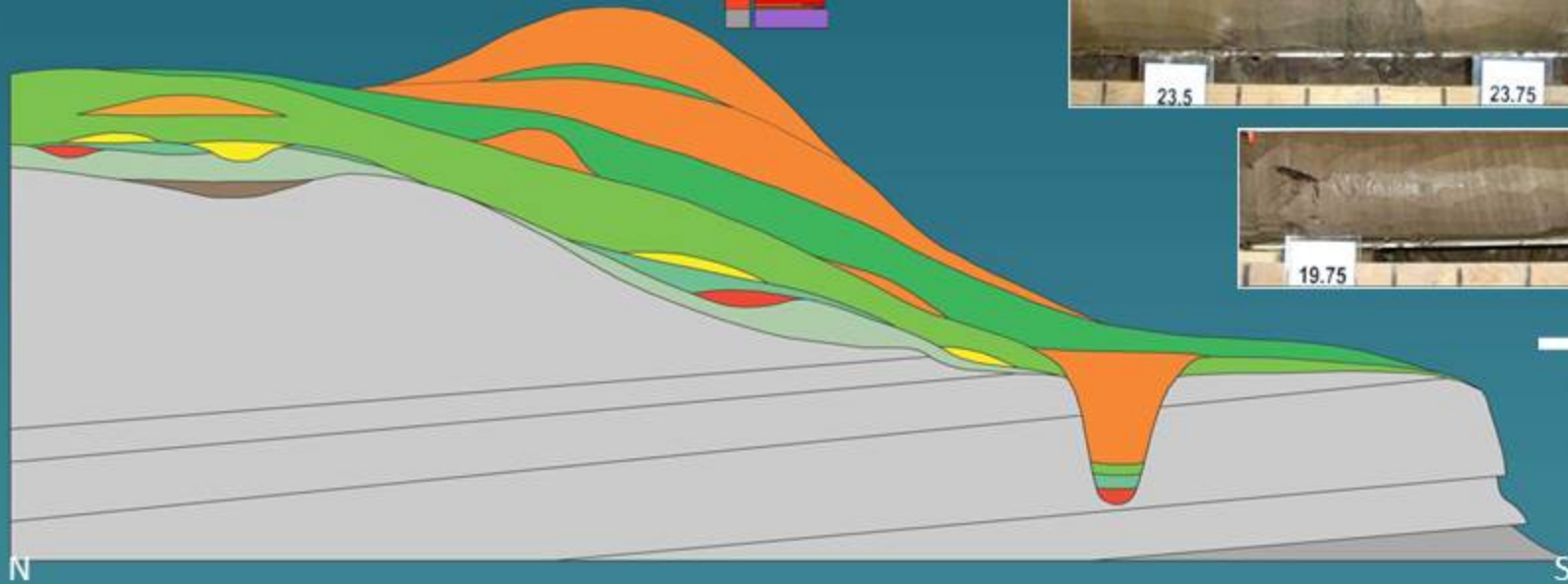
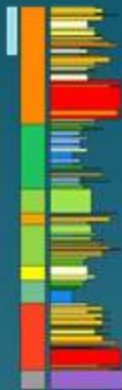
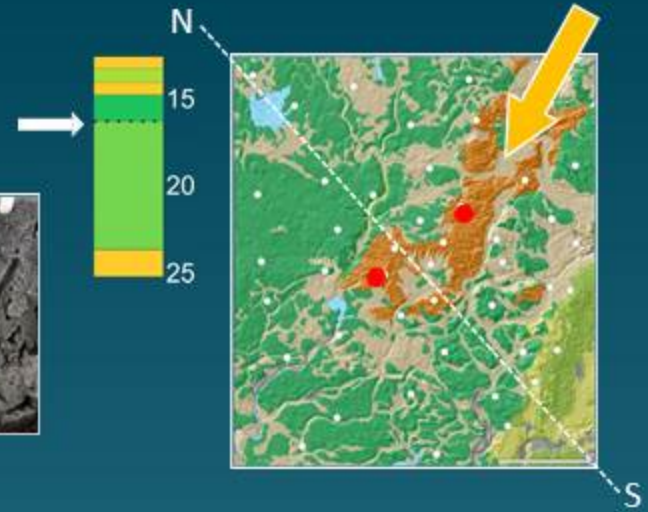
Breakup of Catfish Creek Ice



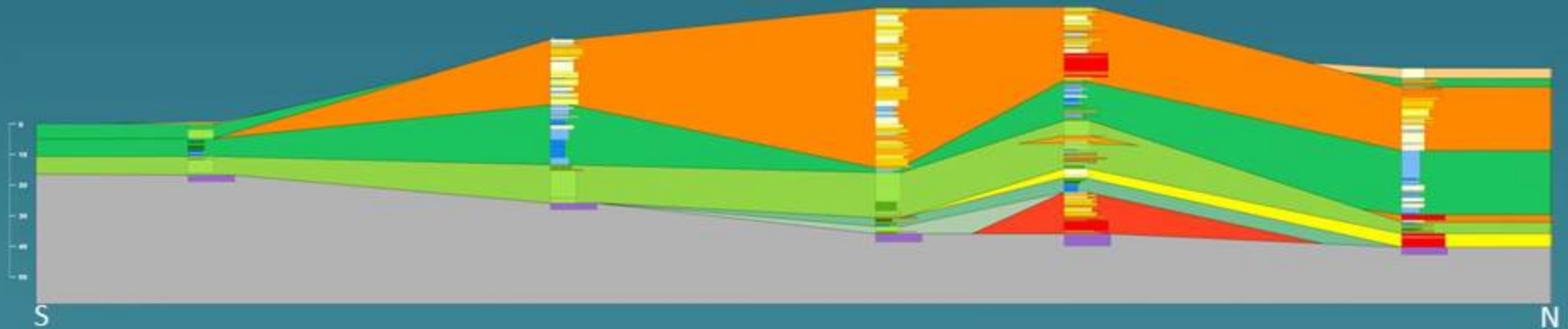
The Orangeville moraine



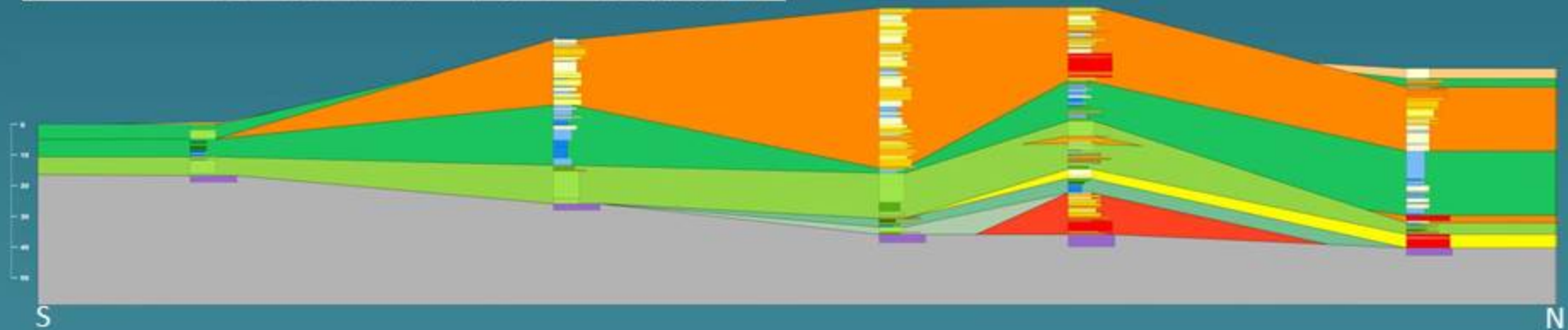
Peeeeew!



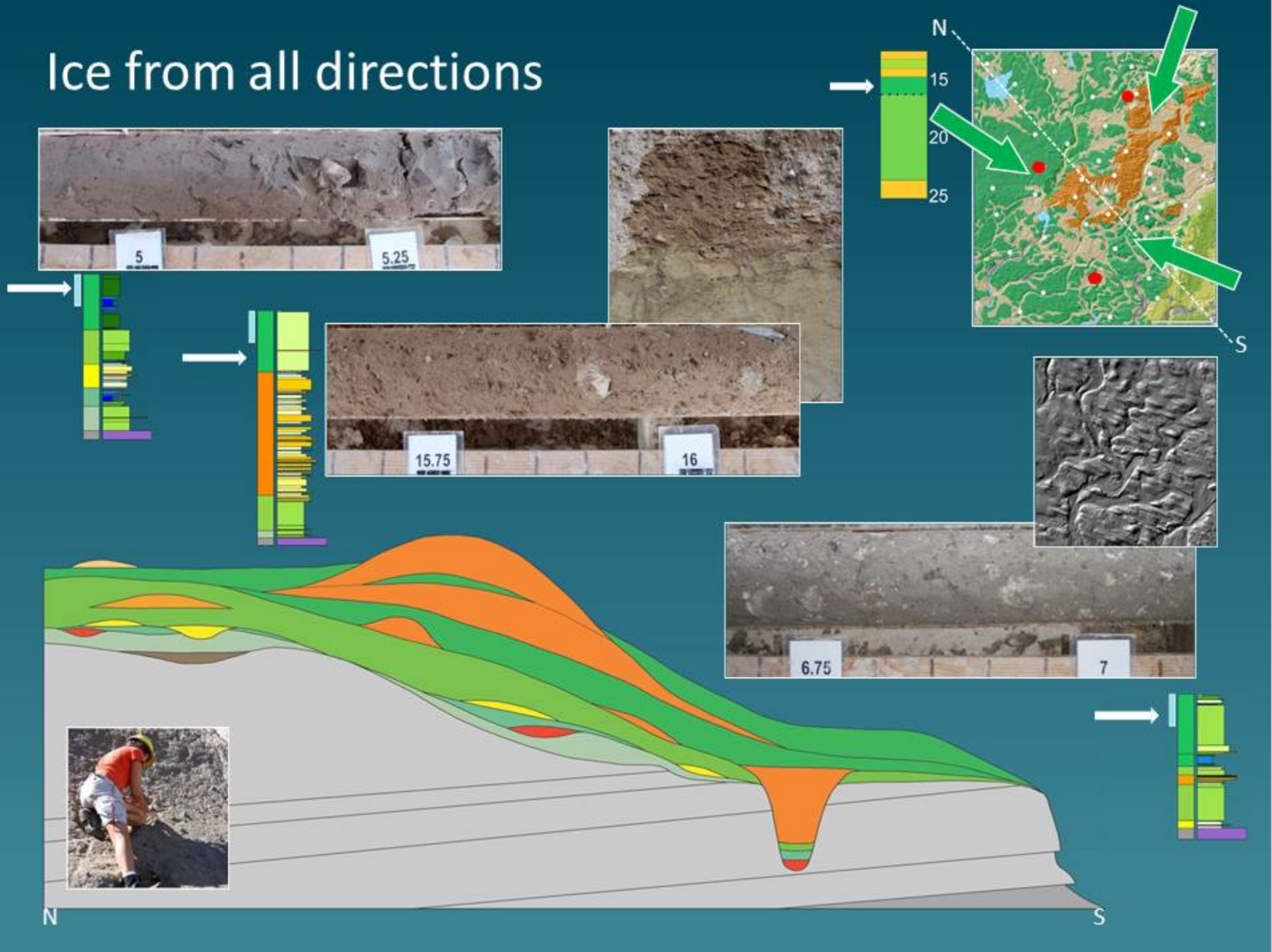
Coarse.....



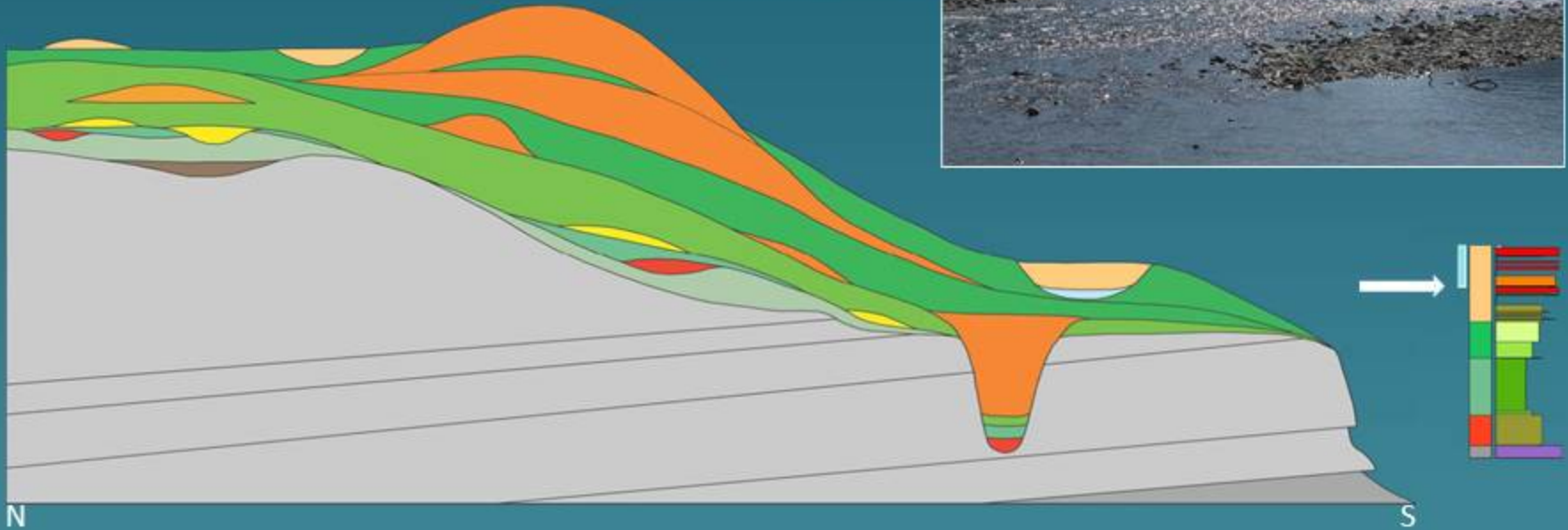
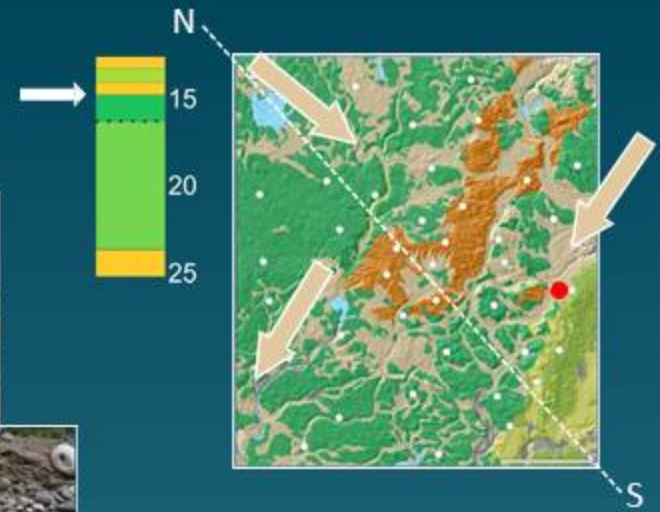
And fine.....



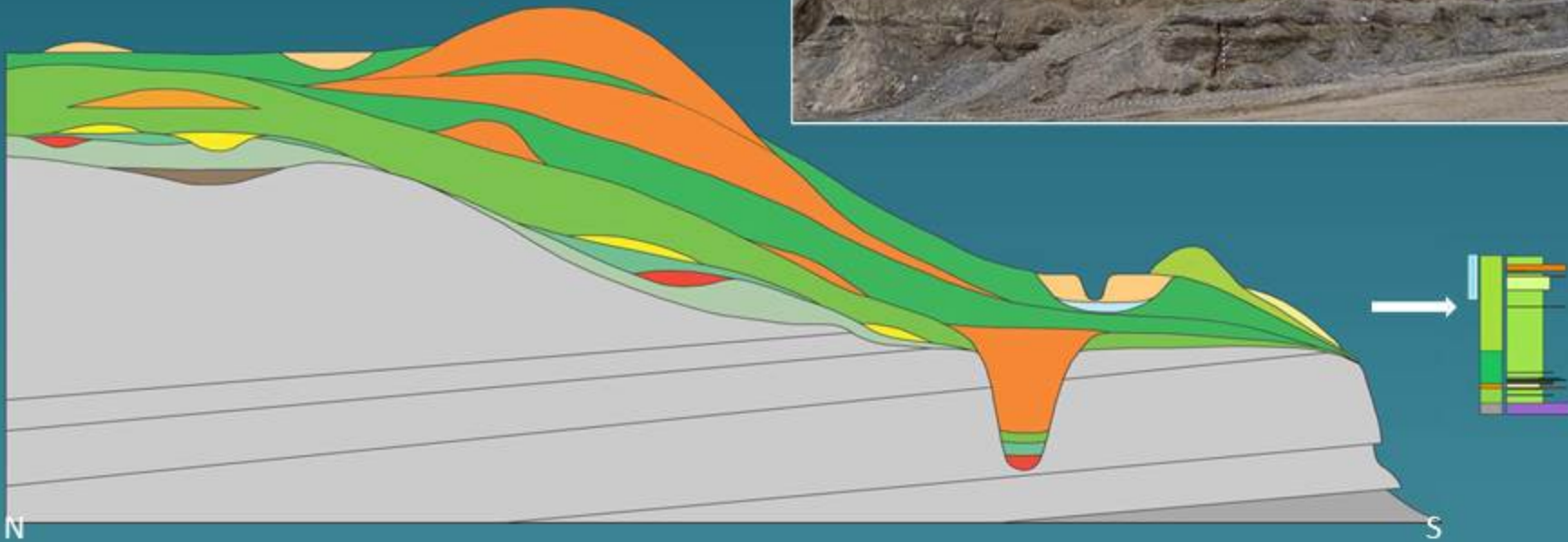
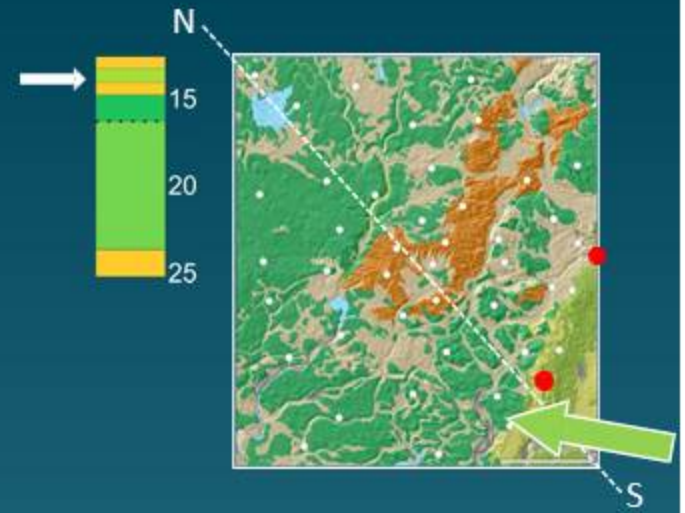
Ice from all directions



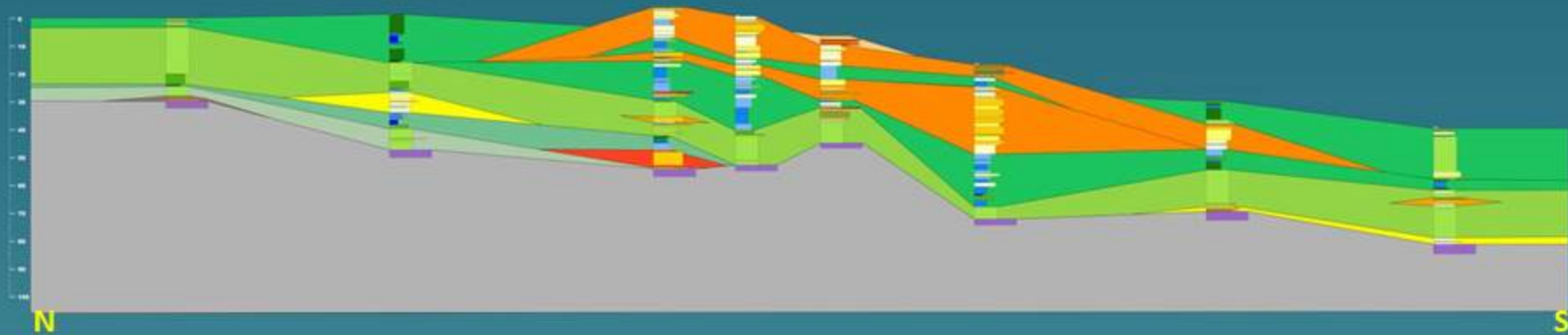
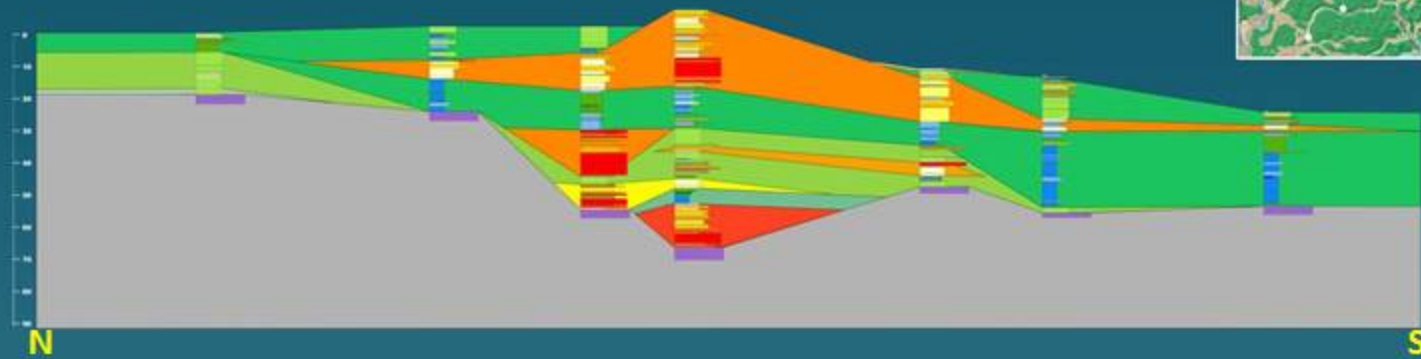
Outwash



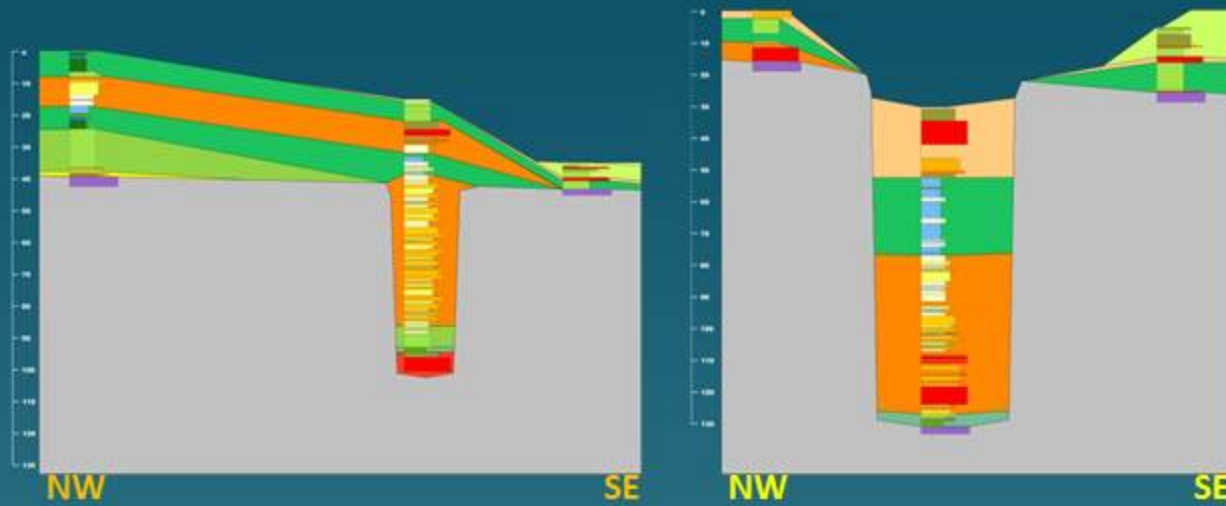
Last gasp



Let's complicate the story



What about those valleys?



What about those valleys?

